



DIPLOMAT

MTL RTA

USER MANUAL



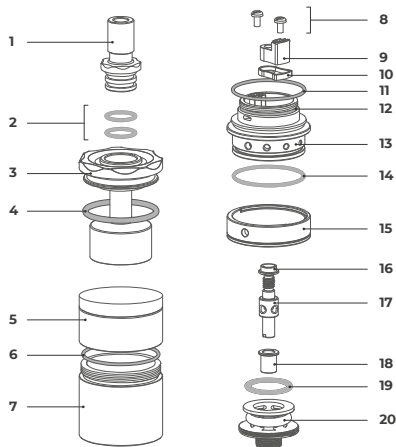
Thanks for choosing **Diplomat MTL RTA** for your vaping experience. Please read this manual carefully before using to ensure best experience. If you require additional information or have any question about this product, please contact our local distributors or contact us through website: www.centenarymods.com

TECHNICAL SPECIFICATIONS

- **Dimensions:** 23mm*40.45mm (non including drip tip and 510 connection)
- **Materials:** SS304L, NRB70 o-rings, PEEK insulators, PC or PSU tank, black POM drip tip
- **Airflow:** 0.8mm, 1mm, 1.2mm, 1.4mm, 1.6mm, 2mm
- **Airpin:** 1.8mm
- **Drip tip:** Black POM, 8.4mm diameter, 15mm length visible part, 4.1mm inner bore
- **Connector:** 510



EXPLODED VIEW

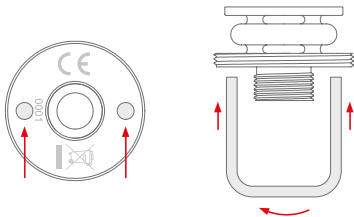


EXPLODED VIEW DESCRIPTION

- **1 - Drip tip** Black POM (acetal), 8.4mm diameter, 15mm length visible part, 4.1mm inner bore
- **2 - Drip tip O-rings** NRB70 8*1mm
- **3 - Bell chamber** SS304L (Duke, Hawkbill, Rodhesian)
- **4 - Bell chamber O-ring** NRB70 16*1.8mm
- **5 - Top tank section** SS304L
- **6 - Tank O-ring** NRB70 20*1mm
- **7 - Bottom tank section** Polycarbonate (PC) / Polysulfone (PSU)
- **8 - Posts screws** SS304L (PH1 Head Screw)
- **9 - Positive post** SS304L
- **10 - Positive post insulator** Polyetheretherketone (PEEK)
- **11 - Deck/Tank O-ring** NRB70 15*1.2mm
- **12 - Deck/Bell Chamber O-ring** NRB70 13*1mm
- **13 - Deck** SS304L
- **14 - Air ring O-ring** NRB70 19*1mm
- **15 - Air ring** SS304L / 2.4mm hole
- **16 - Top airpin insulator** Polyetheretherketone (PEEK)
- **17 - Airpin** SS304L / 4 x 1.5mm hole
- **18 - Bottom airpin insulator** Polyetheretherketone (PEEK)
- **19 - Internal deck O-ring** NRB70 12*1mm
- **20 - Air compressor piece** SS304L / 8 x 4*1mm slots

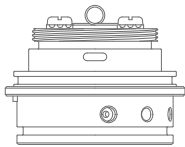
AN INNOVATIVE AIRFLOW SYSTEM

Inside the deck is where the magic happens. With its circular ring between the air intake and airpin, smooth and silent draw, and good air compression/acceleration is achieved without the need for smaller airflow pins. With a larger airflow under the coil, the air will be dispersed more evenly and cool down faster. This allows for a perfect draw, from a really restrictive MTL to a loose MTL, without loss of flavor. You will find an "U" shaped tool inside the spare bag to take apart the air compression piece.

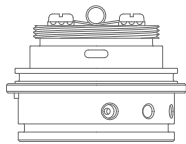


COIL POSITIONING

Flavor and throat hit will vary, depending on the coil placement. Distance between the airflow outlet and the coil can easily be adjusted between 2mm and 1.5mm.



2mm Set up



1.5mm Set up

CHOOSE WISELY YOUR COIL

Recommended wire: 28ga for airflow 0.8mm-1.2mm. 27/26ga for airflow 1.4mm and above.

WARNINGS

Use a regulated mod to check the resistance of the coil/device before using it. Do not use the device if a short circuit is detected.

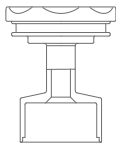
TOO MANY BELLS? TASTE YOUR CHOICE

The Diplomat ships with three different bells:

Duke, Rhodesian and **Hawkbill**. Each with a different geometry, diameter, height and chimney, to allow the Diplomat to pair well with a wide variety of e-liquid profiles.

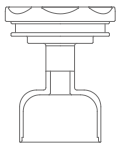
Tip: Test each of the bells and adjust the coil placement to your preference, prior to filling the atomizer with liquid.

DUKE



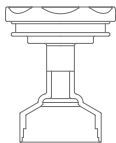
Bell: $\varnothing 15\text{mm}$
Chimney: $\varnothing 4\text{mm}$
Volume: 917mm^3

HAWKBILL



Bell: $\varnothing 15.5\text{mm}$
Chimney: $\varnothing 4.1\text{mm}$
Volume: 1188mm^3

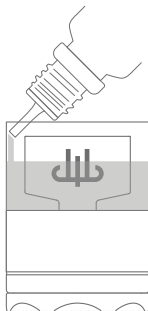
RHODESIAN



Bell: $\varnothing 14.5\text{mm}$
Chimney: $\varnothing 3.8\text{mm}$
Volume: 764.3mm^3

BOTTOM REFILL

In order to refill the Diplomat you should unscrew the tank/bell section upside down from the deck. Fill the tank through the empty space between the tank and the bell. Keep the tank upside down and screw it to the deck.



DISCLAIMER

For a correct functionality of DIPLOMAT MTL RTA please use original CENTENARY MODS accessories only. The manufacturer accepts no liability for any third-party accessories or issues which may have been caused or exacerbated by their use.

HANDLING OF LITHIUM ION CELLS (LI-ION)

- Do not short-circuit Li-Ion cells. When storing or transporting individual cells always use a suitable transport container.
- Do not immerse Li-Ion cells in liquids or throw into fire.
- Do not expose Li-Ion cells to extreme temperatures.
- Do not use damaged Li-Ion cells or cells whose insulation is damaged Only use chargers suitable for Li-Ion cells.
- Never charge Li-Ion cells unsupervised.
- Always use cells of the proper type and sufficient load ratings.
- Dispose of Li-Ion cells at designated recycling points only.

CONTRAINDICATIONS

At present we are not aware of any studies that would indicate any contraindications to the use of our products.

We do, however, recommend to consult your doctor prior to first use if you have: Previous severe or moderate illness, chronic complaints, known allergies to any ingredients (see refill container) or intake of prescription medications.

POSSIBLE NEGATIVE EFFECTS ON YOUR HEALTH

At this time we are not aware of any studies present that would indicate harmful effects of our products to your health. However, this does not mean that adverse effects to your health can be ruled out. Please also consider our note on contraindications, special warnings for vulnerable user groups as well as the statement about addictive properties of nicotine.

POSSIBLE ADDICTIVE PROPERTIES

If you are using eLiquid in your Cigarette that contains nicotine please be aware of the following notice: "Nicotine is a highly addictive substance".

TOXICOLOGICAL DATA IN DELIVERY CONDITIONS

This device does not contain any harmful substances. But if you are using eLiquid in your product that contains nicotine, be aware of the following notice: "Nicotine is a highly addictive substance".

DISPOSAL

Used electrical and electronic equipment as well as batteries must not be disposed of in domestic waste. Consumers are legally bound to bring them to suitable collecting points.

WARNINGS

- Before use please read the manual carefully.
- Do not use DIPLOMAT MTL RTA for other purposes than intended.
- Connect the atomizer to a power source that is suitable for its intended use.
- Always use the atomizer within the recommended power range.
- The manufacturer accepts no liability for atomizers that were damaged during use.
- Using the atomizer incorrectly not only can lead to a defect of the atomizer, but also cause fire.
- Keep the atomizer away from unusual heat, humid or corrosive sources.
- Non-smokers, persons under the legal smoking ages and pregnant or breastfeeding women should not use the atomizer.
- Please keep the atomizer away from children and pets.
- Sale or transfer of cigarettes to minors under the age of 18 years is prohibited.

CONTACT

Paseo Gran Vía 44
50005 Zaragoza, Spain
+34976 05 11 32
info@centenarymods.com
www.centenarymods.com



centenary
MODS

www.centenarymods.com



info@centenarymods.com



Centenary Mods



[@centenary_mods](https://www.instagram.com/centenary_mods)



Centenary Mods

